

Barrel Organ

The magazine of the Salisbury & South
Wiltshire and Heart of Wessex branches
of the Campaign for Real Ale (CAMRA)



FREE
please
take one

March - May 2016



IN THIS ISSUE

- WINCHESTER GATE VOTED PUB OF THE YEAR
- WINTERFEST
- ASSETS OF COMMUNITY VALUE
- SAVE THE GAINSBOROUGH ARMS
- Plus Much More...

**10% OFF
REAL ALES**
for all CAMRA
members
(with a valid
card)



Wig & Quill

1 New Street, Salisbury
Wiltshire, SP1 2PH

t. 01722 335 665

e. theofficialwigandquill2014@outlook.com

www.thewigandquill.com

A **WADSWORTH & CO** PUB

4 REAL CASK ALES

Wadsworth's -

6X, Swordfish, Horizon, Henry's IPA

& 1 GUEST ALE



**A Warm & Friendly
Welcome To All**

FOOD SERVED ALL DAY

Good English pub food is freshly cooked to order using produce sourced from local suppliers. Sunday roasts are a speciality

View our menu online at
www.thewigandquill.com

QUIZ NIGHT ON SUNDAY

Come and enjoy our attractive, secluded courtyard garden and roaring log fires.

We are a traditional pub and welcome children, families and dogs

LIVE MUSIC AT WEEKENDS

Including jazz, blues and acoustic.



SALISBURY & SOUTH WILTSHIRE CONTACTS



CHAIRMAN - DEREK BLACKSHAW
e: chairman@salisburycamra.org.uk, t: 07770 767455

SECRETARY - ANDREW HESKETH
e: secretary@salisburycamra.org.uk

SOCIAL SECRETARY - PAUL SIMPSON
e: social.secretary@salisburycamra.org.uk

MEMBERSHIP SECRETARY - PETE MATTHEWS
e: membership@salisburycamra.org.uk

www.salisburycamra.org.uk

HEART OF WESSEX CONTACTS



CHAIRMAN - PAUL SMITH
e: g1sni@btinternet.com, t: 01747 823574

PUBS OFFICER - PETE SYMES
e: petesyms@tiscali.co.uk

MEMBERSHIP SECRETARY - PAUL REEVES
e: paul@paul8ja.free-online.co.uk

BRANCH EMAIL howessex@aol.com
www.heartofwessex.camra.org.uk

EDITORS KATHY PASCOE, NEIL BEAGRIE & PAUL SMITH
e: barrel.organ@salisburycamra.org.uk

The Editor reserves the right to amend or shorten contributions for publication. All editorial copyright © Salisbury & Heart of Wessex CAMRA 2016. Views expressed in this publication are those of their individual authors and are not necessarily endorsed by the Editor, branch committee or the Campaign for Real Ale nationally. Salisbury & Heart of Wessex CAMRA accepts no liability in relation to the accuracy of advertisements; readers must rely on their own enquiries. It should also be noted that acceptance of an advertisement in this publication should not be deemed an endorsement of quality by Salisbury & Heart of Wessex CAMRA.

Trading Standards (Wiltshire)

Wiltshire Council, County Hall, Bythesea Road,
Trowbridge, Wiltshire, BA14 8JN. t: 08454 040506
e: tradingstandards@wiltshire.gov.uk, www.wiltshire.gov.uk



Campaign for Real Ale Ltd.
230 Hatfield Road, St. Albans, Herts, AL1 4LW
t: 01727 867 201 e: camra@camra.org.uk
www.camra.org.uk

PUBLISHED BY capital

Capital Media Group, 1st Floor, Central Buildings,
Middlegate, Newark-on-Trent, Notts., NG24 1AG
t: 01636 302 302 e: hello@choose.capital
www.choose.capital

© 2016 Capital Media Group. All Rights Reserved. No part of this publication may be transmitted, reproduced, recorded, photocopied or otherwise without the express written permission of the copyright holder.

FROM THE EDITOR

Welcome to the spring edition of our new look Barrel Organ magazine. A quick thanks to all those who have submitted articles and helped distribute the magazine, we would not be here without our dedicated volunteers. As readers, let us know what you think of the magazine and its content and I look forward to any suggestions and ideas for future articles. Our next issue is due out on the 1st June 2016 but please note that our deadline for articles is the 1st May.

Winter has welcomed cosy socials, Salisbury Winterfest, good beer guide selections and pub of the year announcements; with spring comes Mild month, Cider & Perry Month and the anticipation of the Salisbury Beerex (17th & 18th June at the Salisbury Arts Centre!).

Whether you are a CAMRA member or not, we hope that you enjoy this free copy and take some time to read up on who we are and what we are doing in the local area. If you feel inclined to join up and join us, please contact the membership secretary or complete the CAMRA membership form that can be found in the magazine.

And finally, a big thanks in advance to Neil Beagrie who will be taking on the job as primary editor for the next two issues whilst I will be busy looking after a new member of the next generation of real ale drinkers!

Kathy Pascoe

Editor, Barrel Organ magazine



Map of the Branch Areas. Map data ©Google 2015

SALISBURY ASSETS OF COMMUNITY VALUE

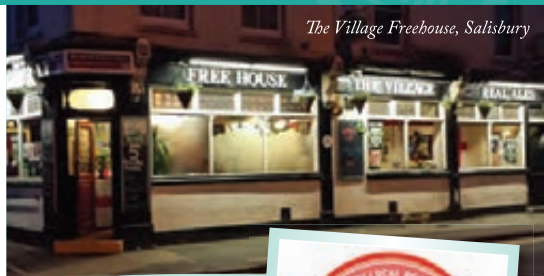
List Your Local

If you love your local pub and want to protect it from demolition or change of use, make sure to list it with your local Council as an Assets of Community Value (ACV). You can nominate as a CAMRA Branch, as an informal group of 21 local people, or as a Parish Council.

In this article we provide an update on our local Salisbury and South Wilts CAMRA branch campaign to list local pubs as ACVs. Working closely with local councillors, Salisbury branch has been able to secure the status of Asset of Community Value for 2 pubs in Wilton Road Salisbury:

The Village Freehouse in Wilton Road close to Salisbury railway station has been a favourite with CAMRA members for many years and has featured consistently in the good beer guide. Unique amongst licensed premises in Salisbury it is the only one that guarantees a traditional dark beer or mild will always be on pump. It has been a pub for over 150 years and has been voted Salisbury and South Wilts's pub of the year no less than 3 times, last in 2014. The Village has also been awarded LocAle status as it always has on at least one beer from a local brewery. This practice of promoting the local economy was one of the points made in the ACV application. Also identified was the fact that the pub is home to both football and cricket teams as well as more traditional pub sports such as cribbage.

The Halfway House, at the other end of Wilton Road in Salisbury, has had a number of changes of tenants and managers in the last few years. In



The Village Freehouse, Salisbury



November 2015 the branch became aware that there was a strong possibility of the premises being sold with a view to being converted to housing. The ACV application pointed out that this was the only pub left in the Lower Bemerton area and if it were to close or be redeveloped an important community asset would be lost that would be unlikely to be able to be replicated in the vicinity.

With these two applications having been successful the branch have had an invitation from Salisbury City Council to work with them to identify and present an argument for further premises to be designated as Assets of Community Value. If you think your local should be on the asset register do get in touch with us and help us put the case together.

For more information from CAMRA on ACVs see www.camra.org.uk/list-your-local

SAVE THE GAINSBOROUGH ARMS

A New Campaign

The Gainsborough Arms, Milborne Port had been a public house and trading since 1866 and is a place for the community to meet, greet, eat, drink and play.

In December 2013 New River Retail acquired 202 Marston's pubs for £90 million with the intention of converting the majority of the 'assets' to convenience stores. As part of the deal Marston's entered into a minimum



The Halfway House, Salisbury

4 year lease-back during which time it will operate the Portfolio as public houses. The Gainsborough Arms formed part of this sale.

In January 2015 a change of use application was submitted to South Somerset District Council to demolish the pub and replace it with a Class A1 convenience store for the Co-op.

This prompted a flood of individual objections submitted to the council from local residents and others (including Heart of Wessex CAMRA) and a petition was organised locally. This had over 50 pages of signatures from people who wished to save the pub. A local group (Gainsborough Community Interest Group) successfully listed the pub as an Asset of Community Value and the listing will remain until March 2020.

The current status of the pub is that all is going well at present. The Landlady, Sandie, has managed to negotiate to manage the pub directly through Marston's for 2 years (From end Nov 2015) with a possible 5 year extension after that. We wish her and the pub well.

The building is still owned by New River Retail and the 4 year minimum lease runs out 2017 / 2018 so it is important to consider the options for what may happen in the future should Marston's not renew their lease agreement. The ACV will provide additional protection

The Gainsborough Arms



for the pub and we will keep monitoring change of use applications.

For more information from CAMRA re ACV please visit www.camra.org.uk/list-your-local

Should you be interested in visiting the pub it is off the A30 in Gainsborough Road at the western end of Milborne Port.



*Planning a
Party or a
Meeting?*

We can accommodate birthday parties, private dining, business meetings or perhaps a full afternoon tea spread. Contact us for more details.

The
BRIDGE INN
'Upper Woodford'

*Tuesday
Supper Club*
3 courses
for £10

We serve up three courses for just £10 every Tuesday evening. The menu changes every week so check facebook or join our mailing list for each weeks offering. Booking essential.

Upper Woodford, Salisbury, SP4 6NU
bridgeinnsalisbury.co.uk
01722 783203

THE DUKE OF YORK

- A TRADITIONAL PUB -

A traditional locals' pub offering 5 ever changing, reasonably priced cask ales and traditional cider



Open Every Evening:
Monday - Friday
from 6:30pm,
Saturday from 4pm
& Sunday from 1pm

The Duke of York | 34 York Road | Salisbury | SP2 7AS



The Salisbury Brewer

Try our finest
cask-conditioned ales
at
The Wyndham Arms
Estcourt Road
Salisbury SP1 3AS
01722 331026

Polypins and minipins
made to order

Labels shown: GFB, Citra, CROP CIRCLE, TAPHOON, The Best of Britain, Summer Lightning (1997, 1992), and a ribbon award.

WINCHESTER GATE VOTED PUB OF THE YEAR

Salisbury & South Wilts Branch

The members of Salisbury and South Wilts branch of CAMRA have, and not for the first time, voted the Winchester Gate on Rampart Road Salisbury as their town pub of the year.

Bill and Anne Duncan took the pub over as a Freehouse at the end of 2007, their first-ever pub, and soon began building up a reputation for an ever-changing and eclectic range of real ales and real ciders. By 2010 Winchester Gate was in the Good Beer

Guide where branch members have voted for it to remain ever since. Bill is a CAMRA member and shares



his love of good beer by offering CAMRA members a discount of 20p a pint.

Chair of the branch, Derek Blackshaw told Barrel Organ that those who know the Winchester Gate be aware of the welcome given by Bill and Anne, the changing range of beer and its excellent quality. He also drew attention to pub's beer and cider festivals through the year (the next beer Festival is 27th -30th May-Ed)

There is been an Inn on these premises since at least the 17th century when it was a coaching inn known as The Dragon Inn. Sometime in the late 1800s the name was changed to the London Road Tavern and then again to the Winchester Gate in the 1970s.

An unusual feature at the back of the pub there is a pétanque terrain, something that most of us would call a French bowls pitch.



REGIONAL & NATIONAL EVENTS

MARCH 10th - 12th

CAMRA BRISTOL BEER FESTIVAL

Brunel's Old Station, Temple Meads, Bristol.

www.camrabristol.org.uk/festival

MARCH 18th - 19th

**CAMRA WINCHESTER REAL ALE
& CIDER FESTIVAL**

Guildhall Winchester, The Broadway, Winchester, Hampshire. www.winchesterbeerfestival.org.uk

APRIL 1st - 3rd

CAMRA MEMBERS WEEKEND & AGM

Liverpool Guild of Students, Mountford Hall, Liverpool. www.camraagm.org.uk

APRIL 8th - 9th

WICKHAM CHARITY BEER FESTIVAL

The Wickham Centre, Mill Lane, Wickham, Hampshire (non-CAMRA event).

www.wickhambeerfestival.co.uk

JUNE 2nd - 4th

CAMRA SOUTHAMPTON BEER FESTIVAL

O2 Guildhall, West Marlands Road, Southampton.

www.southamptonbeerfestival.org.uk

JUNE 17th - 18th

SALISBURY BEEREX

Salisbury Arts Centre, Bedwin Street, Salisbury, SP1 3UT. www.salisburyartscentre.co.uk

NEW YEAR SOCIAL

At the Rai d'Or, Salisbury

Thanks to Simon and staff at the wonderful Rai d'Or in Salisbury for hosting the branch winter social on Saturday 16th January. Great Thai food and superb beer was available - a selection of Red Cat Smoggy or Prowler, Downton Honey Blonde, and Vibrant Forest Flying Saucer.

Thanks also to Paul for brilliantly organising the event and to the 50 members who came along and enjoyed it. This is probably a branch record for a social event turnout (other than the beer festivals) so Paul has set a high bar for next year...



Barrel Organ

The magazine of the Salisbury & South
Wiltshire and Heart of Wessex branches
of the Campaign for Real Ale (CAMRA)

FREE AD
DESIGN

BOOK 4
EDITIONS
FOR A
10%
DISCOUNT

ADVERTISE WITH US & REACH 3000+ REAL ALE DRINKERS

Advertising costs as little as £58 for 3 months! Barrel Organ distributes to branch area pubs in the both CAMRA Salisbury and South Wiltshire and the Heart of Wessex areas and is available online.

It's never been easier to reach over 3000 people with your advertising.

Full Page: £195 +vat • Half Page: £125 +vat • Quarter Page: £65 +vat



CAMPAIGN
FOR
REAL ALE

To advertise call our publishing partners
Capital Media on 01636 302 302

capital

Victoria & Albert

Netherhampton

16th Century "Quintessential British"
Thatched Pub Just South Of The City
Of Salisbury Near The Racecourse.

- ~3 Ever Changing Guest Ales~
- ~Good Selection On Draught~
- ~Good Food~
- ~Log Fire~
- ~Large Covered Patio~
- ~Peaceful Garden~
- ~Dog's Welcome On Leads~
- ~Children Welcome If Sedate(d)~

Go To www.victoriaandalbert.org
For What's On At The Pub & Pump
Tel:01722 743174

Salisbury & South Wilts Pub Of The
Year 2005, 2007, 2012

KEYSTONE BREWERY

FINE BEER
BREWED IN
SOUTH WILTSHIRE

Regular Beers

- Bedrock 3.6%
- Gold Hill 4%
- Gold Spice 4%
- Large One 4.2%

Seasonal Beers

- Ruby 4.8%
- Very Pale Ale 4.6%
- Born To Be Mild 3.8%
- Christmas Pale Ale 4.6%
- Cornerstone 4.8%
- Porter 4.5%



www.keystonebrewery.co.uk

e: info@keystonebrewery.co.uk
t: 01747 820426 / 870307

The Old Carpenters Workshop, Berwick St Leonard, Salisbury SP3 5SN



• GREAT QUALITY CASK ALES

Regular real ales plus ever-changing guest ales

• FABULOUS HOME COOKED FOOD

including delicious Sunday Roasts

Enclosed beer garden
with a decked seating
area and covered patio



Ample parking

Family & Dog friendly

20p OFF A PINT OF REAL ALE*

with production of a current CAMRA membership card

*Terms & Conditions: 20p off is only available on pints of Real Ale. Offer runs
01.03.2016 to 31.05.2016. Current CAMRA Membership Cards only.

A warm welcome awaits at

THE WHITE HORSE

AT QUIDHAMPTON

*A proper village pub, with a
village pub atmosphere*

Join us for our

ANNUAL BEER FESTIVAL

3rd, 4th & 5th June 2016

Lower Road, Quidhampton, Salisbury, SP2 9AS
t. 01722 744448

f [whitehorsequidhampton](https://www.facebook.com/whitehorsequidhampton) t [quidhamptonpub](https://www.twitter.com/quidhamptonpub)

www.whitehorsequidhampton.co.uk

BREWERY NEWS



FEATURED BREWERY - KEYSTONE

Keystone Brewery was set up in July 2006 by husband and wife team Alasdair and Charlotte Large, taking the beautiful Fonthill arch as inspiration for the brewery name. They are based in Berwick St Leonard, near Hindon, within the Fonthill Estate.

Alasdair assesses every business and brewing decision in terms of environmental and local sustainability. Not just barley grown in the fields around the brewery, English hops and water from a local borehole, but also pumps and brewery equipment sourced locally. Every pint of Keystone beer is produced in the most sustainable way possible.

The regular beers are: Bedrock Bitter (3.6% abv), Gold Spice (4% abv), Large One (4.2% abv) plus a wide range of seasonal beers. Keystone can now

Breweries within our branch areas are Blackmore Ales, Downton, Hop Back, Keystone, King Alfred Ales, Sherborne, Sixpenny, Small Paul's and Stonehenge. We provide news and updates for all our local breweries and a more in-depth focus feature on one brewery in each issue of Barrel Organ.

supply beer from many of the region's best small and medium sized breweries including Yeovil, Wessex, Hanlons, Coltleigh, Isca Ales, Bude, Abbey Ales, Box Stream, Moles, Downton, Three Castles, Plain Ales, Ramsbury, Townmill, Milk Street and Liberation as well as cider from Lillys Cider.

Locally their beers are to be found at Lamb, Hindon and Beckford Arms, Fonthill Gifford and of course at their own Benett Arms Tisbury. Around 150 other outlets are also supplied. Beers are also available direct from the brewery, please phone Charlie on 01747 870307 for trade sales.

Please see website for full details www.keystonebrewery.co.uk



BLACKMORE ALES: No further news on this brewery following their restart a few months ago.



DOWNTON: The brewery is open to the public on the last Thursday of every month from 6pm – 9pm (“The Thirsty Thursday Club”).



HOP BACK: The brewery has released online the seasonal beers for 2016. These are expected to run for two months at a time following customer feedback that one month

often gives customers little time to obtain and appreciate each one: • Hooking Good (February and March). ABV 4.6. Ruby coloured with a deep malty flavour. • Spring Zing (March and April). ABV 4.2 A fantastic beer made from maize, wheat and barley malts. • Yakima Blonde (April and May). ABV 4.2. A quaffable ale bursting with sweet nectar and citrus fruit. • NEW! Hop Back will brew a special bitter for the Salisbury Festival which begins in May. Like the festival it has a New Zealand theme and will use local “Waimea” hops.

• NEW! Melony Sippit (May and June). ABV 4.5. A series of fortunate events has produced this golden ale that showcases one of the new German hop varieties bred for distinctive flavourings; Hull Melon which promises honeydew melon on the palate along with hints of strawberry.

KING ALFRED ALES: Production is temporarily suspended in this part-time brewery. The owner is currently working away.

SHERBORNE: Production has now ceased and there is no information as to when and if it may start again.



SIXPENNY: the Brewery was the winner of the Best Brewer category in the “Taste of Dorset Awards 2015”. The award was presented by Kate Adie, the former BBC news correspondent at the Awards’ Ceremony at the George Albert Hotel in Dorchester on 3 November. Sixpenny’s current winter beer, 6d Black, was chosen for two local beer festivals Salisbury

Winterfest and Dorchester Beerex. In early March, it will be replaced by the spring seasonal beer, Cranborne Chaser 3.9% (OG1041), which is a copper coloured ale, distinctly hoppy with a slight toffee caramel flavour derived from crystal and pale malts. Other seasonal beers to follow: Rushmore Gold (June – August) and then Dorset Ruby (September – November).



SMALL PAUL'S: Production was down in 2015, a deliberate decision on the part of the owner. However bespoke beers continue to be produced and beer festivals and local pubs and clubs supplied.



STONEHENGE: Trading conditions remain challenging but sales are still fairly good, helped by contracts with JD Wetherspoon for the last few months and on into 2016. Sales over the festive period were in line with expectations, while sales in the Salisbury city area have improved, with more pubs taking occasional deliveries. Plans are in hand to update the brewery website and to strengthen the efforts to market the brewery and its products. Sales of bottled spring water remain encouraging; with sales at the Stonehenge visitor centre buoyant and plans to market the products to new outlets are in hand.

CAMRA MEMBER DISCOUNTS

The following is a list of local pubs that offer a discount to CAMRA members. Please notify any errors or new additions to the editors at barrel.organ@salisburycamra.org.uk

THE BELL, Amesbury:
Wetherspoon CAMRA member voucher 50p per pint (*T&C apply*)

THE KING'S HEAD, Salisbury: Wetherspoon CAMRA member voucher 50p per pint (*T&C apply*)

RAID'OR, Salisbury: 1st pint full price, subsequent pints 50p off

THE VILLAGE, Salisbury: 20p per pint, 10p per half on Real Ales

WINCHESTER GATE, Salisbury: 20p per pint, 10p per half

WIG & QUILL, Salisbury: 10% discount on real ales

NOG INN, Wincanton: 10p per pint

Members need to be in possession of a valid CAMRA membership card to claim the discounts.

Salisbury Rugby Club

BEER · CIDER FESTIVAL

FRIDAY 13TH MAY 7.00PM - 11.30PM
SATURDAY 14TH MAY 2PM - 11.30PM

ENTRY AVAILABLE ON THE DOOR ONE £5 TICKET VALID FOR BOTH DAYS

LIVE BANDS
FRI: The Passenger Club
SAT: The Land Girls

For more info visit
www.salisburyrfc.org

EVERYBODY WELCOME!

LIVE MUSIC IN THE PUBS
FOOD Available

WHAT?UB

CAMPAIGN FOR REAL ALE

whatpub.com
Featuring over 35,000 real ale pubs

Over 84% of Britain's real ale pubs featured

Information updated by thousands of CAMRA volunteers

Created by CAMRA who produce the UK's best beer & pub guide

Thousands of pubs at your fingertips!

FLACK  MANOR
BREWERY

FLACK'S DOUBLE
FLACK CATCHER

BREWED IN Romsey

01794 518 520
info@flackmanor.co.uk

THE FOX & GOOSE
COOMBE BESETT
April 8, 2016

Presents
An 'Open Music' Night

Every third Thursday of the month - from 8.30pm
Bring an instrument, play along or sing - join in the fun with Tim Madden & friends

Open All Day • Food Served from 12 noon - 9pm
Blandford Rd, Salisbury, Wiltshire, SP5 4LE • 01722 718437
www.foxandgoose-coombebissett.co.uk
A warm and friendly atmosphere where all are welcome even well behaved dogs get spoilt!

The Coppleridge Inn
GREAT BEERS, SUPERB FOOD
& BEAUTIFUL GROUNDS.
IDEAL FOR FAMILIES.

A traditional country pub set in an old farm house with 15 acres of meadows and woodland.
A friendly bar and four different dining areas each with its own log fire and style. Offer a range of home cooked pub classics.
Sun terrace • Children's Garden • Dogs Welcome
10 recently renovated, spacious en-suite rooms

Our 18th Century restored barn is a function room full of character. We are renowned for our weddings.

Motcombe, Shaftesbury, Dorset SP7 9HW
Tel: 01747 851980 Fax: 01747 851858

www.coppleridge.com

CASK MARQUE

DOWNTON BREWERY
ESTD 1988

'Home of
Chimera Beers'

Telephone:
01725 513 313

Fax: 01725 513 513 email: sales@downtonbrewery.com
www.downtonbrewery.com

Unit 11 • Batten Road • Downton Ind Est
Downton • SP5 3HU

SALISBURY'S 36TH BEEREX

Save the Date, June 2016

In 2015 BEER magazine picked out Salisbury's Beerex as one of the top 10 beer festivals in wonderful places. No wonder they did. It is set in the Salisbury Arts Centre which was formally St Edmund's Church where the pillars and high vaulted ceiling along with the stained-glass make this a unique setting. Where the altar once stood is now performance stage for the live music that accompanies the festival. In fine weather those attending to be found sitting in the large churchyard where, according to Salisbury CAMRA's festival organiser Hilary Bird, "some people have their favourite tomb to use as a table. I kid you not".

Derek Blackshaw, chair of the CAMRA Salisbury branch told Barrel Organ that this is a very popular festival with over 50 beers and ciders. These come from all over the country but will be predominantly from Wessex and the West Country. Also featured this year will be beers from the North West.

Tickets go on sale in April and those for the Saturday lunchtime session will often sell out early. Tickets are available from the Salisbury Arts Centre, call 01722 321744 or visit www.salisburyartscentre.co.uk



If you would like to advertise in the Beerex Programme or sponsor one of the casks of beer please contact the Arts Centre or email hilary.bird@salisburycamra.org

Salisbury Arts Centre, Rotary COGS
& Salisbury CAMRA bring you

BEEREX 36

**FRIDAY 17th & SATURDAY
18th JUNE 2016**

Over 50 real ales • Music both sessions

Tickets on sale in April

Box office 01722 321744

www.salisburyartscentre.co.uk

DIARY DATES *Heart of Wessex Branch*



MARCH 2016

3rd OPEN COMMITTEE MEETING -
White Lion, Bourton (7.30pm).

16th BRANCH SOCIAL - To the Fountain Inn,
Shaftesbury (8.15pm) followed by the Two
Brewers, Shaftesbury (9.30pm).

APRIL 2016

6th OPEN COMMITTEE MEETING -
Plough, Manston (7.30pm).

20th BRANCH SOCIAL - To the Angel
(8:15pm) then the Lamb (9:00pm) in
Hindon.

MAY 2016

4th OPEN COMMITTEE MEETING -
Trooper, Sourton Caundle (7.30pm).

18th BRANCH SOCIAL - to the Half Moon,
Horsington (8:15pm) followed by the White
Horse, South Cheriton (9:15pm).

JUNE 2016

1st OPEN COMMITTEE MEETING -
Red Lion, Kilmington (7.30pm).

*EVENTS - Proposed brewery trip to Wadworths
Brewery, Devizes.*

WINTERFEST

It's 19th year!

Over three hundred real ale enthusiasts came from far and wide to enjoy Winterfest at The Royal British Legion Club in Salisbury. Now in its 19th year, Winterfest, organised by the Salisbury and South Wiltshire branch of the Campaign for Real Ale (CAMRA), is a winter beer festival. Twenty three very different real ales from around the country along with two ciders were available over the three sessions 29th - 30th January.

Some came all the way from Germany to enjoy the occasion and beers. John Golda of Nebraska joined CAMRA while based at RAF Molesworth in Cambridgeshire. Now based in Germany, he travelled to Salisbury with his wife and two friends especially for Winterfest.

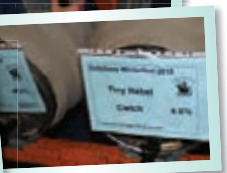
Festival goers voted for their favourite beer. This year the Beer of the Festival award was shared between Kennet & Avon Brewery's Savernake Stout 5.3% and



Tiny Rebel Brewery's Cwtch 4.6%. The Savernake Stout, a full-bodied beer with aromas of liquorice and coffee, is certified gluten free. Cwtch, a Welsh Red Ale, is currently Champion Beer of Britain. The name Cwtch means an affectionate hug, or also a cupboard!

Attendees also had the opportunity to join CAMRA at our membership stand and to learn about the work of the branch.

Money raised at the festival will go towards CAMRA's work campaigning on issues affecting pubs and breweries.



Various photos from
the Winterfest

MAKE YOUR OWN CIDER

With Blackmore Vale Cider

In the previous edition of Barrel organ we gave some pointers to those who perhaps hadn't tried cider but thought they would give it ago and recommended speaking to Richard at the Unicorn. An ideal time to go would be to his forthcoming cider festival from 29th April to 1st May.

Having tried it perhaps you would like to have a go at making it yourself for home consumption or indeed selling it on. It's perfectly legal and small producers don't have to register for duty payments. If you're still interested then read on...

You may have already come across a few strange names – Tom Putt, Kingston Black, and Harry Master's Jersey. Well here's a few more – Brown Snout, Knotted Kernel and Yarlington Mill. However there are hundreds of varieties and categorised into Bittersweet Apples, Sharp or Bittersharp Apples and Sweet Apples. However, to find out more about the varieties and what you actually do with them to produce your cider elixir you really should seek some professional advice and hands-on experience. It's a tad more than 1) pick, 2) crush, 3) extract, 4) ferment, 5) drink; although I'd like to think it wasn't.

Unlike brewing, whose courses tend to be expensive and not available in our locality (although Home Brew groups exist and would be pleased to help), you can probably pick up enough information by going on a short cider makers introductory course. With that in mind Alan Berry of Blackmore Vale Cider (email: alanberry215@btinternet.com) runs just such a course from Empire Farm in Templecombe, Somerset. This is happily within walking distance of Templecombe station if you have access to the Waterloo/Exeter line.

Alan runs a three-hour afternoon session in October (on the 15th this year). The session starts at Empire Farm, where he introduces you to the basics of making cider – the different types of apples, and the equipment you will need. Then you move to Alan's workshop on the other side of the village, where you can see his orchard and equipment. He will demonstrate the whole process including the preparation of the fruit, followed by milling and pressing. Everybody will get a chance to join in and help. Afterwards you return to

the farm for the final Q and A session and afternoon tea and cake. To take part, go to www.empirefarm.co.uk/cider-making However, Alan will take individuals on separate days if required.

Alan's Blackmore Vale cider is sold through pubs and clubs and does well at local shows; most recently at the Mid-Somerset Show 2015 where he was named Somerset Cider Champion. Whilst in 2014 at the Bath and West Show his medium farmhouse cider gained a second prize; his sweet farmhouse cider was very highly commended and his cider was voted the People's Choice from a blind tasting by members of the public. Alan Berry is an active member of South west of England Cider maker's Association (SWECA).

Editor's note - May & October are Cider & Perry Month! CAMRA promotes real cider and perry all year round but May & October, given their relationship to the traditional production cycle, are focal points. Why not take the opportunity to visit some of the many pubs which now offer real cider or perry and give them a try. And remember, at most CAMRA beer festivals you can usually find a range of cider & perry to sample.



CAMRA campaigns
for real cider and perry

CAMRA
CAMPAIGN
FOR
REAL ALE

Real cider and perry grows on trees

Real cider and perry is made from 100%
fresh apple and pear juice;
not artificially gassed up or processed

Visit camra.org.uk/ciderpubs to find real cider and perry pubs

SO WHAT IS CRAFT BEER?

The jury is out...

This is one of the latest drink styles to hit our pubs but what is it and where does it fit with CAMRA? I have a big problem answering this as no-one seems to know what Craft Beer is. If that was clear I could at least have my own opinion of where it fits with CAMRA.

I know what cask beer (also called Real Ale) is – beer which has had a second fermentation in its container (cask) and any slight fizz in it is from its own generated gas not gas added as it is served. I know what keg beer is – beer which has not fermented in its container and has gas added as it is served to give it a bit of fizz. Then bottled beer can be like cask beer with fermentation in the bottle or like keg beer with no fermentation but gas added as it is bottled. Canned beer is occasionally like cask (such as in the 5 litre cans confusingly called mini-kegs) but more often like keg with gas added as it is placed in the can.

Where does Craft Beer fit in with this? Is it Real Ale or not? Is it a threat to our traditional beers?

I have looked around as asked a few of my beer drinking friends and got these answers.

"It's very hoppy American style beer styles and can be from cask, keg, bottle or can"

"It is always keg but is produced by small producers with a lot of care and thought - not like mass produced keg bitters and lagers"

"It is pale hoppy American style keg beer"

The brewers say something different. A lot of small cask beer producers now claim the word Craft on their pump clips and publicity for beers of all different styles. So do some of the larger producers, Greene King IPA one of the country's biggest cask brands claims to be Craft.

How about the pubs and craft bars? Some craft bars have no cask beer others have cask and keg as well as bottles and cans. They mainly tend towards the idea of small producers, carefully produced products and filtered rather than pasteurised for the keg products. Wetherspoon's advertises Craft beers in bottles and cans and is also now promoting 'Craft on Draught' – which is all keg and mainly foreign.

So What is Craft Beer? It seems to be whatever you want to claim it to be so it is impossible for CAMRA to state a position related just to the term Craft.

I hope this has made you think - and enjoy a drink while debating what Craft means to you. To find out what it means to me and what I think it ought to mean to CAMRA you'll have to wait for the next edition of Barrel Organ...

A personal view from Hilary Bird, member CAMRA Salisbury and South Wilts branch

DIARY DATES *Salisbury & South Wiltshire*



MARCH 2016

2nd OPEN BRANCH MEETING - Wyndham Arms, Estcourt Road, Salisbury (8.00pm).

16th BRANCH SOCIAL - Salisbury City Crawl. starting at the Royal George (8.00pm), followed by the Cycling Club, Wig and Quill, & Deacons.

25th MINI BUS TRIP : White Hart Bishopstone, Queens Head Broadchalke, Fox & Goose Coombe Bissett, Yew Tree Odstock & Radnor Nunton.

For more info on socials and to book for minibus trips please contact Paul Simpson social.secretary@salisburycamra.org.uk

APRIL 2016

6th OPEN BRANCH MEETING - Salisbury Rugby Club, Castle Road, Salisbury (8.00pm).

20th BRANCH SOCIAL - Amesbury: Bell, Antrobus Arms, Kings Arms, George and the New Inn

MAY 2016

4th OPEN BRANCH MEETING - Village Freehouse, Wilton Road, Salisbury. (8.00pm)

18th SALISBURY CITY CRAWL - Chapter House, Grey Fisher, Old Mill, Rose & Crown



**AWARD-WINNING REAL ALES & LAGER,
NATURALLY STILL SPRING WATER
AVAILABLE TO THE TRADE
& THE GENERAL PUBLIC**

STONEHENGE ALES LTD, The Old Mill, Mill Road,
Netheravon, Salisbury, Wiltshire SP4 9QB
Tel: 01980 670631
Email: info@stonehengeales.co.uk
www.stonehengeales.co.uk
www.stonehenge-spring-water.co.uk



The Winchester Gate

The Gate is one of the few pubs in Salisbury that is completely free of tie.

We offer an ever-changing range of real ales from around the country.

LocAle accredited • Salisbury & South Wilts
CAMRA Pub of the Year 2010, 2013 & 2016

Discount for card-carrying CAMRA members.

Dates for this year's Beer Festivals:

Spring, 27th – 30th May


Summer, 18th – 21st August

113-117 Rampart Road, Salisbury, SP1 1JA
01722 322834

www.winchestergate.co.uk

THE
DEVIZES INN
COMMUNITY LOCAL FREEHOUSE

**3 PERMANENT
REAL ALES + GUEST**



WADWORTH

**10P OFF ALL REAL ALES
FOR CAMRA MEMBERS**
(ONLY WITH A VALID MEMBERSHIP CARD)

53-55 DEVIZES ROAD, SALISBURY,
SP2 7LQ • TEL: 01722 416630



THE PARISH LANTERN

Weekly Food Specials

Tuesday - Steak Night
Combo to share + 2 steaks £20

Wednesday - 2 course special £9.95

Thursday Thai Night 2 courses £9.95

Senior citizens 10% off main menu Mon-Fri
excluding bank holidays

Easter Beer Festival - Fri 25th - Mon 28th March

Romsey Rd | Whiteparish | Wiltshire | SP5 2SA
t. 01794 884392 | e. theparishlantern@gmail.com

www.theparishlantern.co.uk

A Campaign of Two Halves

Fair deal on beer tax

Save Britain's Pubs!



Join CAMRA Today

Complete the Direct Debit form and you will receive 15 months membership for the price of 12 and a fantastic discount on your membership subscription.

Alternatively you can send a cheque payable to CAMRA Ltd with your completed form, visit www.camra.org.uk/joinus or call 01727 867201. All forms should be addressed to the: Membership Department, CAMRA, 230 Hatfield Road, St Albans, AL1 4LW.

Your Details

Title _____ Surname _____

Forename(s) _____

Date of Birth (dd/mm/yyyy) _____

Address _____

Postcode _____

Email address _____

Tel No(s) _____

Partner's Details (if Joint Membership)

Title _____ Surname _____

Forename(s) _____

Date of Birth (dd/mm/yyyy) _____

Email address (if different from main member) _____

Direct Debit Non DD

Single Membership £24 £26
(UK & EU)

Joint Membership £29.50 £31.50
(Partner at the same address)

For Young Member and other concessionary rates please visit www.camra.org.uk or call 01727 867201.

I wish to join the Campaign for Real Ale, and agree to abide by the Memorandum and Articles of Association

I enclose a cheque for _____

Signed _____ Date _____

Applications will be processed within 21 days

01/15

Campaigning for Pub Goers & Beer Drinkers

Enjoying Real Ale & Pubs

Join CAMRA today – www.camra.org.uk/joinus



Instruction to your Bank or Building Society to pay by Direct Debit



Please fill in the whole form using a ball point pen and send to:
Campaign for Real Ale Ltd, 230 Hatfield Road, St Albans, Herts AL1 4LW

Name and full postal address of your Bank or Building Society Service User Number

To the Manager Bank or Building Society

9 2 6 1 2 9

Address

FOR CAMPAIGN FOR REAL ALE LTD OFFICIAL USE ONLY
This is not part of the instruction to your Bank or Building Society

Membership Number

Name

Postcode

Postcode

Name(s) of Account Holder

Bank or Building Society Account Number

Branch Sort Code

Reference

Signature(s)

Date

This Guarantee should be detached and retained by the payer.

The Direct Debit Guarantee

- This Guarantee is offered by all banks and building societies that accept instructions to pay by Direct Debit.
- If there are any changes to the amount, date or frequency of your Direct Debit The Campaign for Real Ale Ltd will notify you 10 working days in advance of your account being debited or as otherwise agreed. If you request The Campaign for Real Ale Ltd to collect a payment confirmation of the amount and date will be given to you at the time of the request.
- If an error is made in the payment of your Direct Debit by The Campaign for Real Ale Ltd or your bank or building society you are entitled to a full and immediate refund of the amount paid from your bank or building society.
 - If you receive a refund you are not entitled to, you must pay it back when The Campaign for Real Ale Ltd asks you to.
- You can cancel a Direct Debit at any time by simply contacting your bank or building society. Written confirmation may be required. Please also notify us.



ANDWELL
BREWING CO

Beautifully Crafted Hampshire Ales



Try our award winning beer, available at
The Brewery Shop and your local pub

BEER • TOURS • SHOP